

# Application Note AN1207

## Connecting bentrup controllers with USB port to Windows

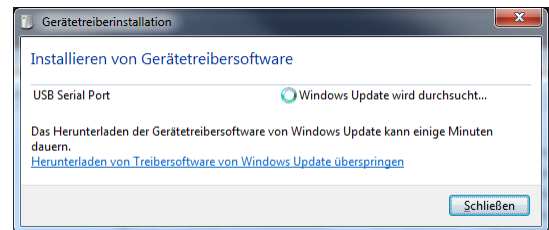
### 1.) General Information

The USB interface provides PC connectivity to your bentrup TCS2/M2/TC20xx controllers. This allows access via WinControl or own applications. After successful installation bentrup controllers appears as COM port.

### 2.) Connecting Controller

After connecting Windows prompts finding a new USB device following searching for drivers.

Next steps depends on the Windows version, the following illustrations is taken from Windows 7.



### 3.) Installing Driver – First Step

A query dialog “update driver software” appears. In some cases this doesn't happen, please follow instructions 3a.

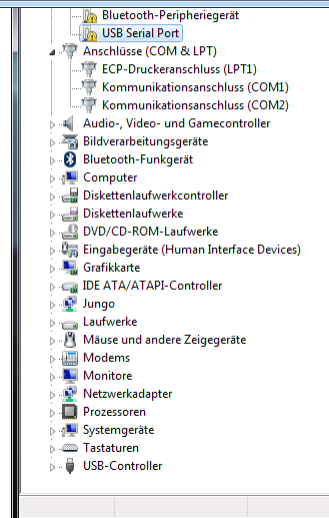
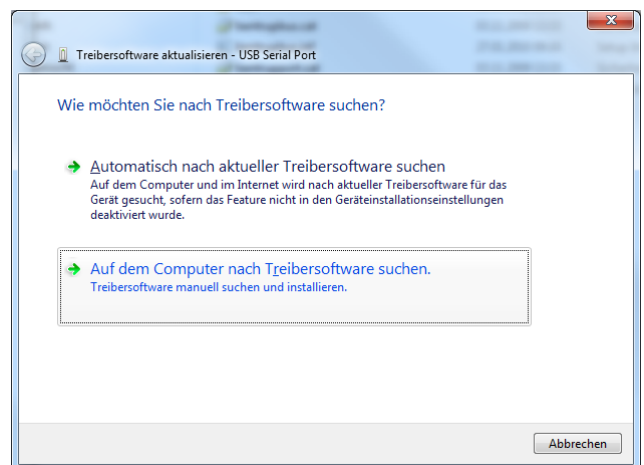
#### 3a) Using Device Manager

Click on Start button and write “device manager” (in your language). Start the device manager.

Take a look to yellow tagged devices. You should find a “USB Serial Port”.

Right-Click this item and select “update driver software” (first item of pop-up menu).

Select the 2<sup>nd</sup> option of the “update driver software” dialog to search on your computer for drivers.



## 4.) Installing the drivers

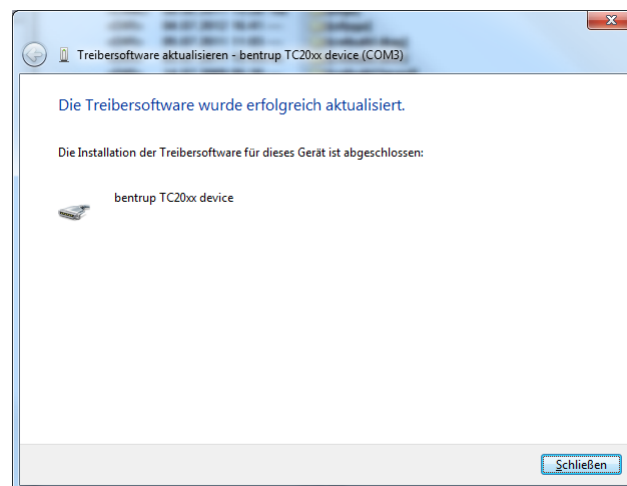
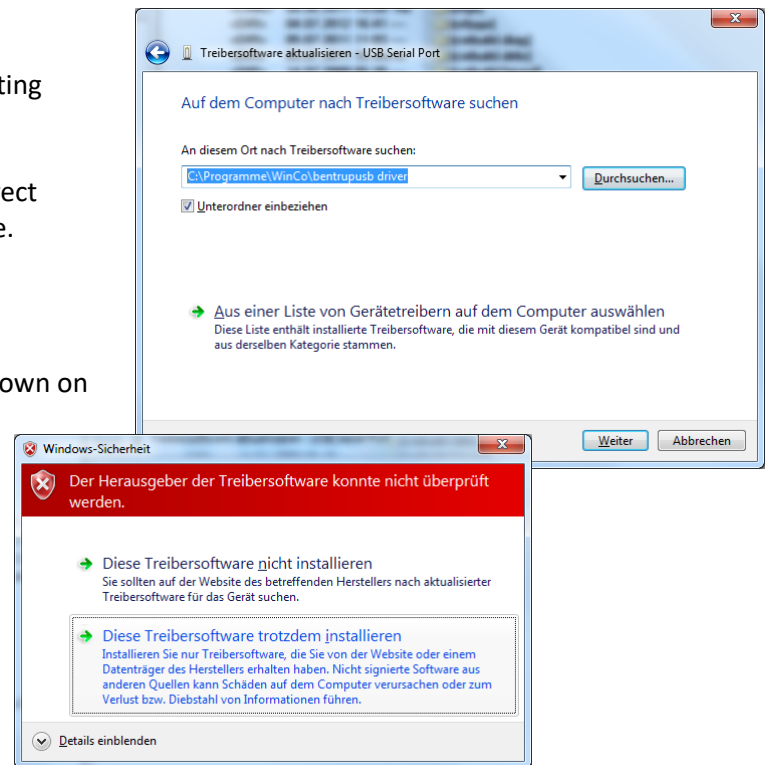
Download the USB drivers from <https://bentrup.de/de/service/> after selecting controller model. Choose “Firmware USB Driver.ZIP”.

After downloading unzip the folder and direct Windows to load the drivers from the folder.

Click on “Continue” button.

Confirm the Windows security dialog as shown on the right hand side. You can trust the driver provided by bentrup as a reliable source.

Windows takes some time to copy the driver files into the system directory.



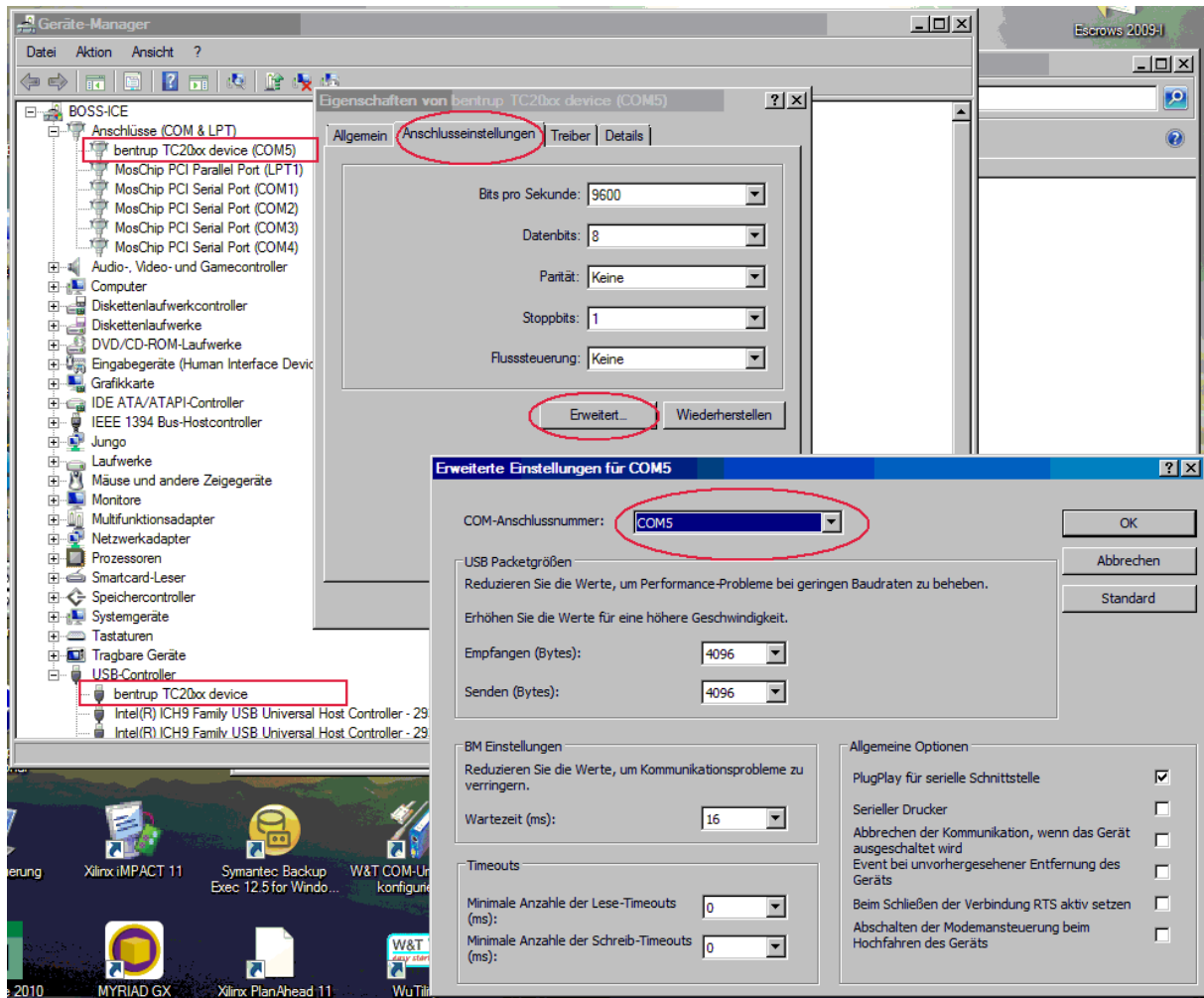
You get a “finish” message like above.

Take a look into the device manager (see 3a) to find out, which COM port number is assigned to the “bentrup TC20xx device”.

## 5.) Change Number Of COM Port

If Windows has assigned a port number above 8 it's necessary to change it.

Right-Click to the “bentrup TC20xx device” and select “Properties”. Select “Enhanced” on the 2<sup>nd</sup> page. Now you can change the port number. You can set it to “used” numbers too, if the former device isn't present at the same time.



©2023 bentrup Industriesteuerungen / Fernwald. We reserve the right to change specifications without prior notice.

Initial Issue	Jul 13 <sup>th</sup> 2012	AI
Updated CP2104	Mar 28 <sup>th</sup> 2023	Be