

Unverbindlich empfohlene Verkaufspreise in € zzgl. 19% MwSt. Wiederverkäufer Konditionen erfragen. Änderungen und Irrtum vorbehalten. *Recommended retail prices. Ask for your retail discount depending on order quantities. Changes might apply without prior notice.*

## Regelanlagen für Wandmontage / Controllers for Wall Mounting



### Kompaktserie / Compact Series

Einfachst zu bedienende Regler, kompaktes Handgerät / *Most simple to operate controller for compact budgets*

TC66.....	€ 295
6 programmes for Ceramics	
TC88 .....	€ 370
flexible temperature profile, 20 Programs	



### The New Compact Series 2022

Schlank, elegant, stylisch. Nachfolger der Kompaktserie. App/Superwise-Ready / Slim, elegant and sophisticated. Successor of the successful compact series. Ready for SuperWise/App

TC75 .....	€ 315
6 programs, Ceramic use	
WIFI for SuperWise/App .....	€ 30
TC95.....	€ 415
fully flex temp. profile, 1.8" TFT, WIFI	
USB Data logging.....	€ 30



### Klassikserie / Classic Series

Die bewährten bentrup Klassiker, schnelle Werteeingabe durch die übersichtliche Tastatur / *The tried and tested bentrup classics, fast entry of values by clearly structured keyboard*

TC405/30 .....	€ 525
free and flexible temperature profile	
TC507.....	€ 590
flexible temperature profile, free programming, programm display	
3. Schaltausgang/3rd control output.....	€ 50



### Smartserie / Smart Series

USB-Logfiles, Smartphone Zugriff, modernes GUI mit Werteeingabe auch über Dial, Mehrzonenoptionen, Vergabe von Programmnamen / *USB log files, smartphone access, modern GUI using dial to enter values, multi-zone options, assignment of program names*

TC705 .....	€ 650
real shape profile display w/ values	
TC707.....	€ 730
flexible temperature profile, Bluetooth, weekly programme cycles via RTC	
zus Regelzone/addtl control zone .....	€ 160
Schaltausgang/3rd control output.....	€ 50

## Zubehör / Accessories

Aufpreis/Extra charge HAN15D.....	€ 10	Gegenstecker m. Kabel/Socket w/cable HAN7D .....	€ 40
Wandhalterung/Wall Mounting Kit .....	€ 15	Analog Ausgang / output 0-10V/4-20mA.....	€ 190

## Regelanlagen für den Einbau / Panel Mounting Controllers

### Kompaktserie / Compact Series



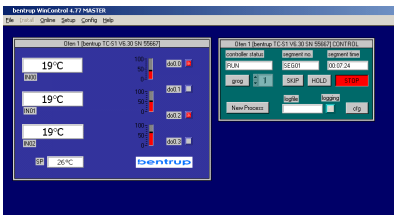
TC2010.....	€ 185	SW2 (2 zus. Schaltausg./2 add. control outputs)..	€ 50
TC2044.....	€ 175	DO2 (2 Logikausgänge / 2 SSR outputs) .....	€ 50
TC2066.....	€ 210	AO2 (2 Analogausgänge / 2 analogue outputs)...	€ 50
TC2088.....	€ 245	DI2 (2 Digitaleingänge / 2 digital inputs).....	€ 50
		Industrial IO Interface (RS485 & TCP/IP) .....	€ 100
		USB (USB Interface) .....	€ 50

## Industrieserie / Industrial Series



TC-S2.....	€ 880	AI4 (4 add. analogue outputs, fully isolated) .	€ 390
TC-S2.....	€ 1090	AO4 (4 analogue outputs, fully isolated) .....	€ 390
(Mehrkanal / multi loop)		SW8 (8 add. control outputs max. 8A/250V) .	€ 390
TC-M2 .....	€ 1350	DIO8 (8 Inputs & 8 Outputs 24V DC) .....	€ 390
TC-M2 .....	€ 1890	PWM4 (4 high speed PWM outputs for SSR) .	€ 390
(Mehrkanal / multi loop)		COMBI-A (SW3, AI3) or -B (SW3, DI3) .....	€ 220
		PLC (use MicroWin to programme networks) .	€ 390
		ATM (atmosphere control functionality) .....	€ 390

## Software WinControl / SCADA



WinControl Vollversion / full edition (single controller license) .....	€ 890
WinControl Vollversion / full edition (4 controllers license).....	€ 1075
Kundenspezifische Oberfläche / customized face.....	€ 350
WinConfig (configuration only for all bentrup controllers) .....	free of charge
Nachf. Optionen auch für / options below also for WinConfig/WinControl light:	
USB to RS485 cable 3m (needed on TC-S2/M2).....	€ 95
USB to RS485 industrial network adapter (isolated) .....	€ 175

## Zubehör / Accessories

### Messgeräte / Readings



TM100 Batteriebetrieben / battery operated .....	€ 145
TM100 Netzbetrieben / mains operated.....	€ 165
TM100 x 2 Netzbetrieben / mains operated.....	€ 195
TM100 - O <sub>2</sub> Netzbetrieben / mains operated.....	€ 670

## Thermoelemente und Sonden / Thermocouples and Probes

Wir liefern Sensoren jeglicher Art (Thermoelemente, RTD, für Sauerstoff, Druck). *We supply all kinds of sensors (TC, RTD, O<sub>2</sub>). Examples:*

### Thermocouple Type S (PtRh10%-Pt)

max. Temperature 1400°C mechanically resp. 1800°C electrically, wire diameter 0.35mm, ceramic 610 cover diameter 8mm, open contacts (for isolated aluminium head add €12 + bracket €9)

120 mm.....	€95	250 mm .....	€149
150 mm.....	€109	350 mm .....	€205
180 mm.....	€122	400 mm .....	€220
210 mm.....	€135	500 mm .....	€245

### Thermocouple Type K (NiCr-Ni)

max. Temperature 1100°C (short time use up to 1260°C), wire diameter 2.0mm, ceramic 610 cover diameter 8mm, open contacts (for isolated aluminium head add €12 + bracket €9)

120 mm.....	€40	250 mm .....	€56
150 mm.....	€44	300 mm .....	€62
180 mm.....	€48	400 mm .....	€72
210 mm.....	€52	500 mm .....	€84

### Sauerstoffsonde / Oxygen Probe 650°C-1400°C

Circonoxyde probe with integrated type S thermocouple

300x10 mm standard design .....	€985
(compatible with TM100-O2)	

### Ausgleichsleitung / Compensating Wire

Type S/R or K, 2x0.22mm, temperature resistant silicone isolation

1 m.....	€5	100 m .....	€190
----------	----	-------------	------